



Welcome



CONTACT

Teacher: Ashley Patzwald
ashley.patzwald@jcschools.us
(573) 659-3286 Ex:691-6224

Plan Time: 1st hr

CONTACT TIME

Emails sent after 5pm during weekdays will be answered the next day during my plan.

Emails sent during weekends will be answered Monday morning.

INFINITE CAMPUS

Keep track of your students' grades online on Infinite Campus. **Regularly checking grades prevents surprises.** I will update Infinite Campus as needed. Late work is entered after current work. Please contact me if you have questions

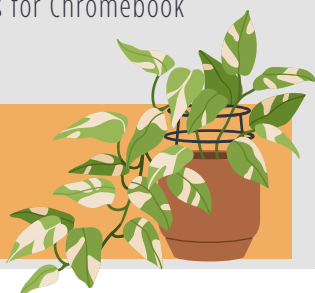
Infinite Campus Parent Portal

GOOGLE CLASSROOM

Assignments will be posted in Google Classroom. Grades will be posted in Infinite Campus. it is crucial that students find their work on Google Classroom when they are absent so that they do not fall behind. Parents can opt to receive notifications and updates form Google Classroom via email.

SUPPLIES

- Charged Chromebook
- Folder/Binder
- Head Phones for Chromebook
- Pencil
- Notebook



EXPECTATIONS

Students are expected to come to class with the necessary materials (Chromebooks, a writing utensil, paper, etc.) on time and in a respectful manner, ready to learn. Be responsible, put unneeded electronics away, and listen attentively when someone is speaking.

COURSE DESCRIPTION

English 1:

Students in English I will read literature and nonfiction texts throughout the course. In addition, students will have opportunities to practice expository, narrative, and argumentative writing. Grammar and style will be monitored in all writing assignments. Course projects will also integrate speaking and listening opportunities for students. The state has created an optional End-of-Course (EOC) exam for this course which may or may not be given.

Newspaper Production: a full-year course in which students produce the school newspaper. In a hands-on laboratory setting, students use technology to highlight the fundamentals of journalism including journalistic writing, photojournalism, graphic design, marketing, and advertising sales. Since the course is co-curricular, students are required to use time in and out of class to fulfill requirements and meet production deadlines.

ABSENT WORK POLICY

After an absence, students are expected to get all notes and assignments they have missed from **Google Classroom**. Students will have one day for every day of excused absence to submit make up assignments. Students who miss a quiz or test due to absence should make arrangements to complete the test early or promptly upon returning to school.

RETAKE POLICY

Retakes are allowed but it is required that the student meet with me first and completes all formative activities leading up to the summative assessment. If there is ever a concern about a particular test score and their options regarding said score, please reach out! Retakes are always permitted in the case of absences.

NOTE: Final exams **cannot** be re-tested

LATE WORK POLICY

All units contain a set date marking the Mid-Unit Assessment. All formative work assigned up until that date can be turned in late with no penalty. However, after the halfway point of the unit, all formative work previously assigned will no longer be accepted. If you miss a Summative Assessment, for example, a Unit Exam or Final Project, you have 10 school days to complete your missing Assessment with no penalty.

GRADING SCALE

100 - 93 A	76 - 73 C
92 - 90 A-	72 - 70 C-
89 - 87 B+	69 - 67 D+
86 - 83 B	66 - 63 D
82 - 80 B-	62 - 60 D-
79 - 77 C+	59 - Below F



PLEASE BRING CHARGED CHROMEBOOK TO CLASS EVERY DAY

COURSE SCHEDULE



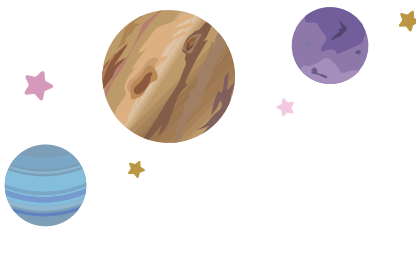
HOUR 1	8:40-9:31	PLAN
HOUR 2	9:36-10:27	ENGLISH 1
HOUR 3	10:32-11:23	NEWSPAPER
HOUR 4	11:28-12:52	ENGLISH 1
HOUR 5	12:57-1:48	ENGLISH 1
HOUR 6	1:53-2:44	CAV TIME
HOUR 7	2:49-3:40	NEWSPAPER

ADDITIONAL RESOURCES

Students in my class will have many resources to help them succeed. Along with their Guided Notes and Assignments completed in class, here are a few additional resources available to them:



MLA STYLE



**INFINITE CAMPUS
PARENT PORTAL**



**OXFORD-ENGLISH
DICTIONARY**

I'm available to meet with students before and after school hours by appointment and during my planning period. Feel free to reach out through email or phone at any time!